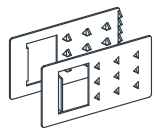


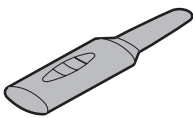
FXN 1129 | FLEXIBLE NEON

SLEEVE FRONT CONNECTOR

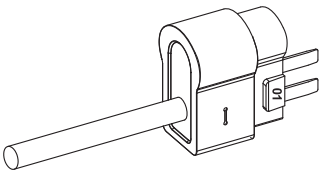
Components



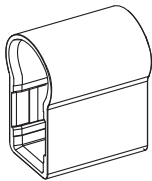
Anti-skidding Clip (2pcs)



Inducer (1pc)



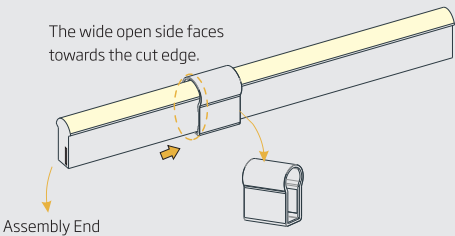
Feed Connector (1pc)



PC Cover (1pc)

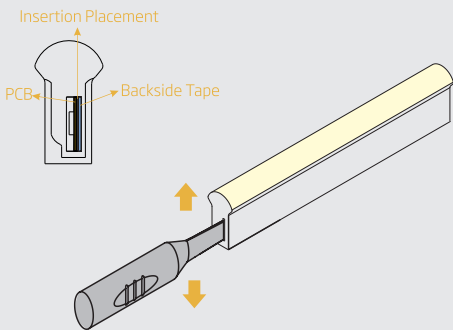
Installation Instructions

Step 1



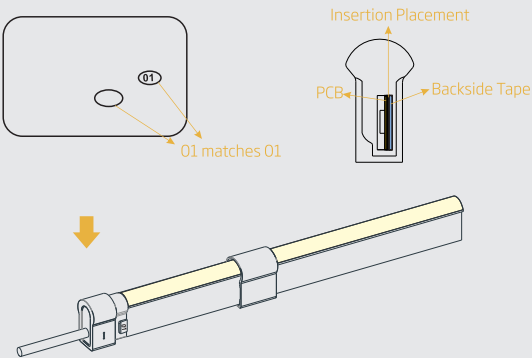
Pay attention the direction of the PC cover before placing it.

Step 2



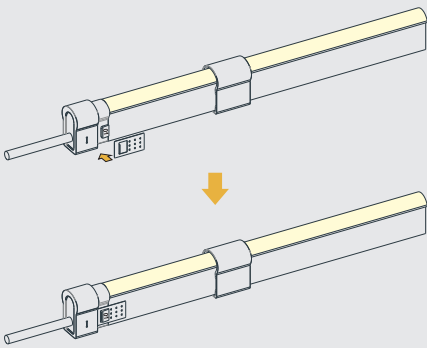
Insert the inducer into the BACKSIDE of PCB and move up and down gently to create a small cavity.

Step 3



Insert the pins of feed connector into the space the inducer created (backside of PCB).

Step 4



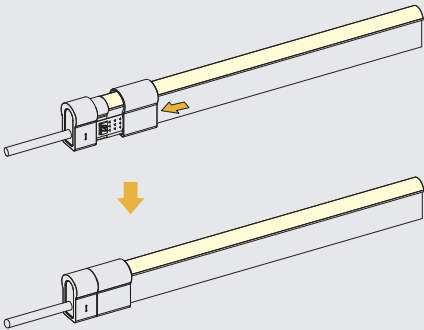
Place the anti-skidding clip to the feed connector with toothed side towards light.

FXN 1129|FLEXIBLE NEON

SLEEVE FRONT CONNECTOR

Installation Instructions

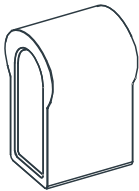
Step 5



Slide back the PC Cover to cover the anti-skidding clip completely until it snaps in the feed connector.

SLEEVE END CAP

Components



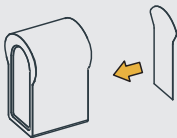
PC Cover (1pc)



Shading Sheat (1pc)

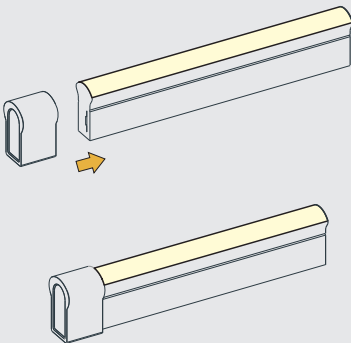
Installation Instructions

Step 1



Placing Shading Sheat.

Step 2



Insert the PC Cover.